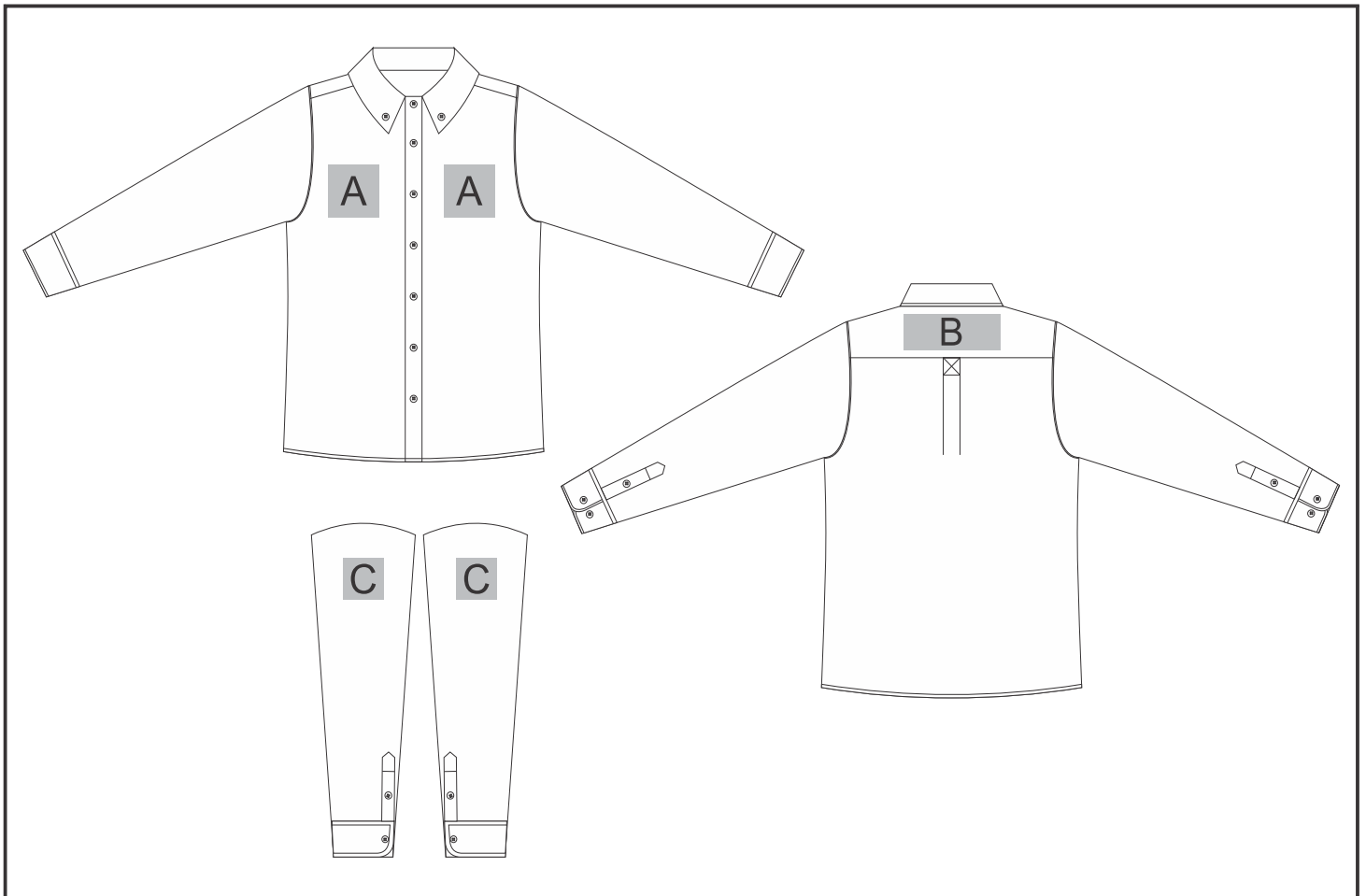


ALT-NHML

Mens Long Sleeve Nottingham Shirt



Need to know:

Includes 1 Position Digital Transfer (setup fee applies)

- Cannot guarantee a 100% straight branding on any clothing item with check or stripe detail
- DTC/EMB inclusive Parameters: Left/Right Chest or Back = 100mm x 100mm

Branding Options:

Position	Branding Method (Branding Code)	No. of Colours	Dimension
A	Embroidery (EMB-A)	N/A	100mm wide x 100mm high
A	Screen Print (SC)	1 Colour	100mm wide x 60mm high
A	Digital Transfer Clothing A6 (DTC-A6)	Full Colour	100mm wide x 100mm high
A	Silicone (STP-A)	N/A	30mm wide x 30mm high
A	Silicone (STP-B)	N/A	50mm wide x 50mm high
A	Silicone (STP-C)	N/A	80mm wide x 80mm high
A	Silicone (STP-D)	N/A	100mm wide x 40mm high
B	Embroidery (EMB-A)	N/A	200mm wide x 200mm high

B	Screen Print (SC)	1 Colour	200mm wide x 70mm high
B	Digital Transfer Clothing A6 (DTC-A6)	1 Colour	148mm wide x 70mm high
B	Digital Transfer Clothing A5 (DTC-A5)	Full Colour	210mm wide x 70mm high
B	Silicone (STP-A)	N/A	30mm wide x 30mm high
B	Silicone (STP-B)	N/A	50mm wide x 50mm high
B	Silicone (STP-C)	N/A	80mm wide x 70mm high
B	Silicone (STP-D)	N/A	120mm wide x 40mm high

C	Embroidery (EMB-A)	N/A	80mm wide x 80mm high
C	Screen Print (SC)	1 Colour	60mm wide x 60mm high
C	Digital Transfer Clothing A6 (DTC-A6)	Full Colour	80mm wide x 80mm high
C	Silicone (STP-A)	N/A	30mm wide x 30mm high
C	Silicone (STP-B)	N/A	50mm wide x 50mm high
C	Silicone (STP-C)	N/A	80mm wide x 80mm high